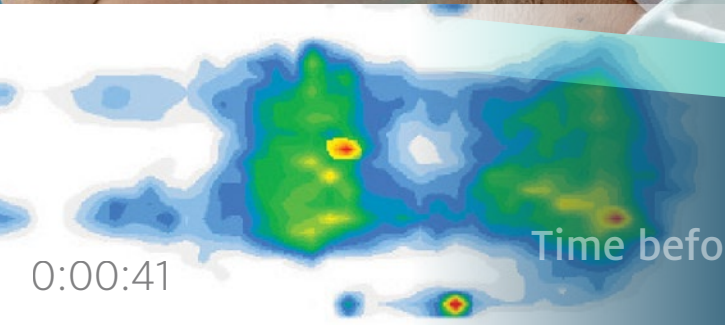


SMART SURFACES & PRESSURE-MAPPING SYSTEMS
REDUCING THE RISK OF PRESSURE INJURIES & PATIENT FALLS.



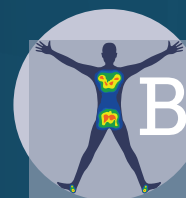
ReST

Available with AI INSIDE™



Time before patient requires turning.

Monitor | Evaluate | Prevent



BodiTrak

distributed by *frv*

Early Detection. Improved Patient Care. Reduced Costs.

PREVENTING PRESSURE INJURIES & FALLS

While innovating the BodiTrak Monitor system, we set forth a simple goal... Providing the healthcare practitioner with a powerful, simple to use tool to help reduce the incidence of pressure injury and falls.

This goal was realized in the form of a single wireless monitoring system that actively assesses patient positioning and pressure redistribution, in real-time. BodiTrak provides useful, intuitive information to help reduce peak pressure concentrations and predict possible bed elopement, before the fall. Offering significant flexibility in monitoring modality, the BodiTrak Monitor can be customized to enhance your clinical practice.

Continuous Monitoring Using Innovative, Wireless Technology

Built into a stretchable "Smart Fabric" cover, the BodiTrak2 Monitor sensor is easily applied to the healthcare mattress. The sensor provides pressure and proximity information to the control unit which automatically processes the information and provides useful data, via wireless technology, directly to the bedside caregiver or central station.

Pressure Injury Prevention

- Easy-to-use, real-time pressure monitoring can take the guesswork out of pressure injury prevention.
- Customized "Time to Turn" indicator with alarm and/or text message helps with turning compliance.
- Areas of high risk for pressure injury are identified using a combination of pressure and shear force.
- May help in quantifying support surface selection using objective data while reinforcing proper turning techniques.

Fall Prevention

- Uses an algorithm to monitor patient movement to predict possible bed elopement intent.
- Adjustable sensitivity and alarm duration to account for patient-specific risk factors.

Innovative Functionality

- Patented, stretchable sensor fabric preserves the immersion properties of the support surface.
- Program can be accessed wirelessly or via provided tablet.
- Data compatible with EMR and HIPPA compliant systems.
- Alarms and alerts customizable to facilitate patient needs and institutional protocols.
- Camera function to capture pressure images for storage and/or transitional communication.



The BodiTrak System maximizes your investment by making your existing bed system work better.

It's More Than Just Equipment. It's Part of the Care.

SIMPLE SOLUTIONS FOR COMPLEX PROBLEMS

Using the BodiTrak App

- 1. Pressure scale:** preset to 5-75mmHg, but can be adjusted to integrate with facility protocol
- 2. Pressure mapping feature:** provides continuous, real time pressure monitoring to identify areas of high risk and allows caregiver to ensure proper off-loading and repositioning (default is 2D mapping)
- 3. Risk:** quickly helps caregivers understand where the patient's skin may be most at risk (based on the Reswick and Rogers risk scale) Displays pressure over time.
- 4. Camera and Library:** allows you to take snapshots of the pressure map for documentation and store them in the Library—these images can also be uploaded to the patient's file



- 5. Turning Timer:** tracks the time until the patient needs to be turned. If patient isn't turned, the caregiver can be sent a SMS text message as a reminder.
Note: All bed exit alarm features are selected in the "Settings."

PREVENTION *versus* TREATMENT

Pressure Injuries

Pressure ulcer treatment costs range **from \$2000 to \$70,000** per wound, with the average hospital's total costs being **between \$400,000 and \$700,000 annually.**¹

US Acute care Pressure Injury Incidence rates range between 10% to 18%.²

Assume:

Annual PI treatment costs =	\$500,000
20 BodiTrak2 Monitors cost =	\$100,000
25% reduction in incidence =	-\$125,000 = Year one return on investment
BodiTrak2 Monitor longevity =	3-5 years = \$750,000 – \$1.25 million savings

'If you are able to prevent half of pressure ulcers and take out variable costs, then you end up saving half of your variable cost. You simply don't incur the cost anymore. It goes directly to operating earnings. **There are no interventions that will drive such a large return as pressure ulcer prevention.**'³

Patient Falls

Assumptions: 20 bed unit, CMS patient (not reimbursed), cost of care for patient fall is \$17,124, current mean rate of incidence is 5.8%

- 7,300 patient days divided by 4.8 (the average LOS) = 1,520 individual patients
- 5.8% of patients experience a fall = 88 patients from this will experience a fall
- 88 X \$17,124 = \$1,510,000/year in patient falls cost
- Preventing 25% of these falls would save the facility \$377,500*
- Cost of 20 BodiTrak Monitors would be \$40,000—resulting in a potential savings of \$337,500*

*Note: actual savings will vary by patient population. This is a projected savings only.

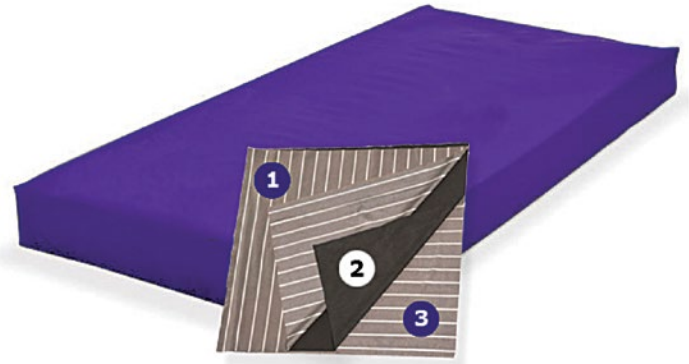
Reducing Risk with BodiTrak Pressure-Mapping

The Next Generation of Pressure-Mapping.

BODITRAK[®] SMART FABRIC

Smart Fabric is a patented, four-way stretch, breathable material that uses advanced elastic sensors to allow the patient to fully immerse into the mattress and reduce the “hammocking effect” that can be experienced with more rigid pressure-mapping systems.

- **Layer 1:** Alternating knit conductive and non-conductive columns
- **Layer 2:** Pressure-Sensitive fabric, varies resistance with force
- **Layer 3:** Alternating knit conductive and non-conductive rows



Specifications

Specification	Mattress Cover	OR Table	Wheelchair
Standard Sizes (Additional Sizes Available)	36" x 80", 36" x 84" 42" x 80", 48" x 84"	Customized to Table	21" x 21"
Sensing Area	Varies by Model	Varies by Model	18" x 18"
Flexible Sensing Cells	1" Square	1" Square	0.5" or 1" square
Weight Capacity	5 to 550 lbs.	5 to 550 lbs.	5 to 550 lbs.
Smart Fabric Material	Lycra Stretch	Lycra Stretch	Lycra Stretch
Latex Free	Yes	Yes	Yes
Connectivity	Wireless, USB Compatible	Wireless, USB Compatible	Wireless, USB Compatible
Life Expectancy	3-5 Years	3-5 Years	3-5 Years
Tablet Warranty	Per Manufacturer	Per Manufacturer	Per Manufacturer
Cover Warranty	2 Years	2 Years	2 Years
CE 0413	Yes	Yes	Yes
ISO 13485 Certified	Yes	Yes	Yes

PATIENTECH/VISTA MEDICAL, LTD. PRODUCTS

PatientTech/Vista Medical, Ltd. products including, but not limited to, Boditrak Sensors are covered by patents, including but not limited to:
 US Patent Numbers: 7,201,063; 6,543,299; 8,161,826; 8,904,876; 8,661,915; 8,966,997; 8,800,386; 8,533,879; 9,642,470; 8,875,331.
 Other patents pending.



1. 'Hospitalizations Related to Pressure Ulcers among Adults 18 Years and Older,' *AHRQ* 2006.
2. Courtney BA, Ruppman JB, Cooper HM. 'Save our skin: initiative cuts pressure ulcer incidence in half.' *Nurs Manage.* 2006;37:36,38, 40 passim.
3. Morse S. 'Pressure ulcers cost the health system \$26.8 billion a year.' www.healthcarefinancenews.com/news/pressure-ulcers-cost-health-system-268-billion-year.

Manufacturer:

Vista Medical, LTD
 A PatientTech Company
 Winnipeg, MB Canada
 800.822.3553
 204.949.7678
www.boditrak.com
info@vista-medical.com

Exclusive Distribution Europe by:



TRV Technik und Reha Vertriebs GmbH
 Gewerbering 47 • D-76287 Rheinstetten
 Phone: +49 7242 25796-0 • Fax: -10
www.pressure-mapping.eu
boditrak@pressure-mapping.eu



Boditrak
 distributed by TRV